

An abstract graphic consisting of several parallel lines in shades of green, blue, purple, and grey. These lines curve and branch out across the page. Interspersed among the lines are several black ovals, some of which are outlined in white. The overall composition is clean and modern.

neoxen®

Neoxen QX Framework

Installation Guide



Table of Contents

Table of Contents	ii
1 About This Document.....	4
1.1 Audience.....	4
1.2 Organization.....	4
1.3 Typographic Conventions	5
1.4 Terms and Concepts.....	5
1.4.1 Abbreviations	5
1.4.2 Terminology	6
1.5 Related Documentation.....	6
2 Release Package.....	7
2.1 Prerequisites	7
2.1.1 Recommended Configuration.....	7
2.1.2 User Rights	7
3 Installation Overview	8
3.1 Installation Directory Tree.....	8
4 Installing Neoxen QX Framework.....	9
4.1 Start the Installation	9
4.2 Welcome.....	10
4.3 Read and Accept the License	10
4.4 Customer Information	11
4.5 Select Setup Type	11
4.5.1 Complete Installation	11
4.5.2 Custom Installation.....	11
4.6 Ready to Install	11
4.7 Wait while Installing	12
4.8 Finish Installation and Fill the Serial Numbers.....	12
4.9 Verify Installation.....	12
5 Additional System Configuration (Optional).....	13
5.1 Setting Paths for Dynamic Linking	13
6 Development Environment Configuration	14
6.1 Settings for Microsoft Visual Studio 2015	14
6.1.1 Hard Tabs vs. Spaces	14
6.1.2 C/C++ Settings.....	15
6.1.3 Linker Settings	15
6.1.4 Resources Settings	15
7 Neoxen QX Framework Program Maintenance	16
7.1 Program Maintenance.....	16
7.1.1 Modify installed program features	16
7.1.2 Repair installed program features	17
7.1.3 Remove installed program	17
7.2 Uninstallation from Control Panel	18
7.2.1 Start the Uninstaller.....	18



7.2.2	Confirm Uninstallation or Exit Uninstaller	19
7.2.3	Wait until Neoxen QX Framework has been Uninstalled.....	20
7.2.4	Verify Uninstallation	20
8	Appendix I: Command Line Parameters.....	21



1 About This Document

This Installation Guide describes installation, configuration and un-installation of Neoxen QX Framework Release 10.58 on Microsoft Windows systems. The following issues are covered in the document:

- Prerequisites for installing
- How to start the installation
- How to perform the installation
- How to verify a successful installation
- How to configure the system
- How to uninstall

1.1 Audience

This guide is intended for the person who is about to install, configure, or uninstall Neoxen QX Framework.

1.2 Organization

This document is organized as follows:

Chapter	Contents
Chapter 1	Describes the purpose of the document. It also explains the terminology and typographic conventions used in the document. A list of related documents can also be found in this chapter.
Chapter 2	Describes release package and the prerequisites for installing the product.
Chapter 3	This chapter describes the general items of the installation and the principles of making this guide.
Chapter 4	Describes the actual installation procedure on the supported platforms and verifying of successful installation.
Chapter 5	Describes additional system configuration. (OPTIONAL)
Chapter 6	Describes development environment configuration.
Chapter 7	Describes how to uninstall the product from the supported platforms.
Chapter 8	Appendix I describes the command line parameters for the setup program.



1.3 Typographic Conventions

Convention	Description	
<i>Italics</i>	<i>Italicized</i>	Text is used to call attention to cross-references.
Bold	Note	Important notes are written in bold.
Courier	Courier	Screen messages as well as literal user input, such as selections, commands, parameters and fields are written in <code>Courier</code> font.

Note: Important notes are written in this style.

Caution: Cautions are written in this style.

1.4 Terms and Concepts

The following abbreviations, terms and concepts are used in the document.

1.4.1 Abbreviations

Abbreviation	Meaning, Definition
GUI	Graphical User Interface
MB	Megabyte
RAM	Random Access Memory
SDK	Software Development Kit



1.4.2 Terminology

Term, Concept	Meaning, Definition
GUI mode installation	Graphical installation with interaction between installation program and user.
IP Address	An identifier for a computer or device on a TCP/IP network.
Silent mode installation	Command line installation of Installation Guide with default options; no interaction between installation program and user.

1.5 Related Documentation

The following list comprises all documents referred to herein. It also lists documents, which provide with additional information about this topic:

#	Document
[1]	Neoxen QX Framework Release 10.58 Readme file



2 Release Package

This release package includes Neoxen QX Framework development kits for 32-bit and 64-bit Microsoft Windows operating systems.

2.1 Prerequisites

You need to have suitable hardware and software installed on your computer. The minimum requirements are listed below.

2.1.1 Recommended Configuration

PC with Quad Core Processor (Intel or AMD) or compatible

8 GB RAM or more recommended

20 MB Hard Disk Space for complete software installation

Network interface with TCP/IP

Microsoft Windows 8.1

Microsoft Visual Studio 2013

Adobe Reader 10.0 or newer

2.1.2 User Rights

Installation in Microsoft Windows operating system versions as described in this document assumes that the following conditions apply:

The user should have Power User rights to run the installer



3 Installation Overview

Installation starts automatically, when the CD is placed into the drive. If the installation program for some reason does not start automatically, browse for the autorun.exe from the installation CD and double click on it

Installation procedure is basically the same on all Windows platforms.

3.1 Installation Directory Tree

The default installation directory of Neoxen QX Framework is:
C:\Program Files\Neoxen Systems\Neoxen QX Framework



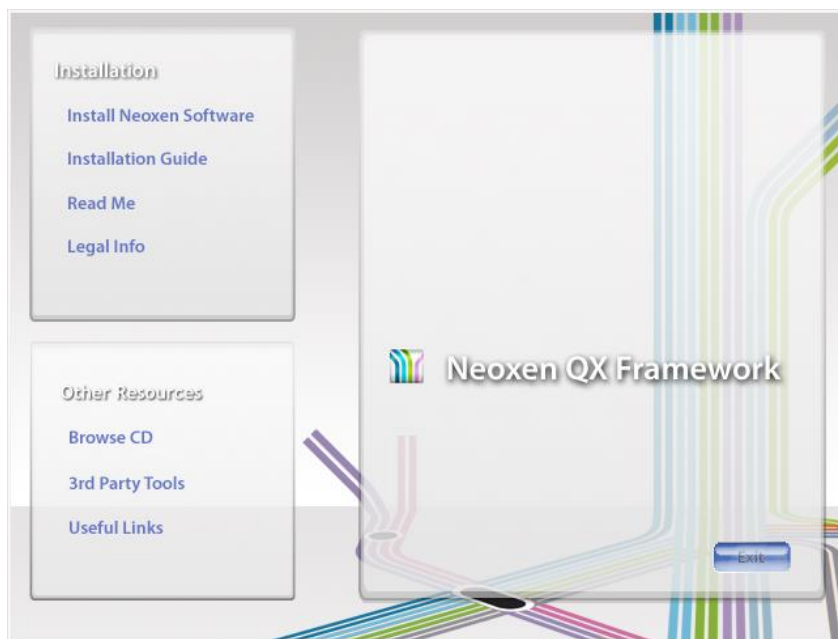
4 Installing Neoxen QX Framework

This chapter provides instructions on how to install Neoxen QX Framework.

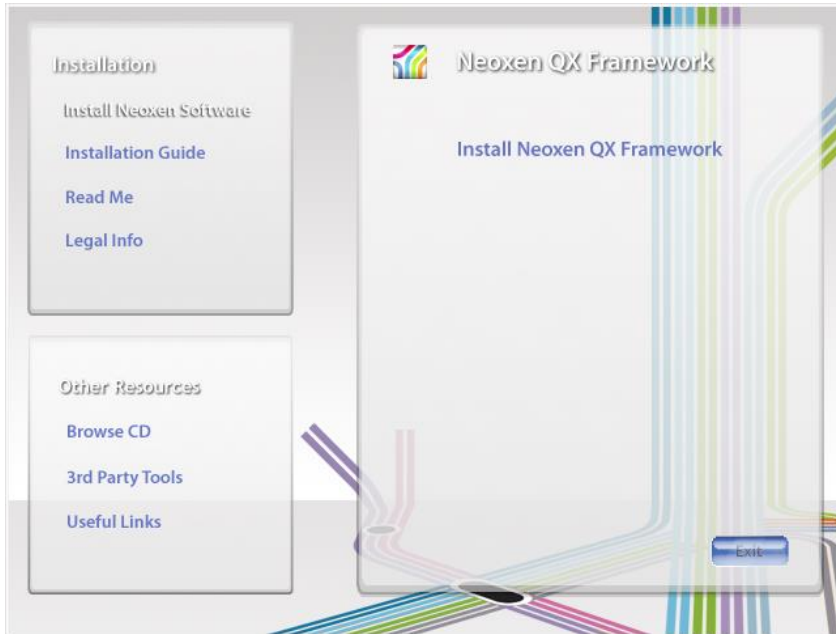
Note: If you have a previous release of Neoxen QX Framework on your system, the installation program asks you to remove it first.

4.1 Start the Installation

1. Ensure that the 2 Prerequisites are fulfilled
2. Installation should begin automatically, when the CD-ROM is inserted in the CD-ROM drive. If it does not start, double click the file autorun.exe in the root directory of the CD-ROM.



3. Click the text: **Install Neoxen Software** from the window opened. The Setup window for Neoxen QX Framework will appear.



4. Click the text: **Install Neoxen QX Framework**
5. Neoxen QX Framework Setup starts to prepare the InstallShield Wizard to guide you in setup process

4.2 Welcome

1. The welcome window will be opened. It informs you about the program to be installed.
2. It is recommended to close all other applications before continuing
3. Click **Next >** to proceed

4.3 Read and Accept the License

The License Agreement page contains the licensing information. This information can also be found in the product CD-ROM under the license folder.

1. Review the information
2. Select **I accept the agreement**
 - You can continue installation only by accepting the agreement
3. Click **Next >** to proceed



You can also print the License by clicking the **Print** button on this page. Printing starts immediately to the printer that is defined as your default printer.

4.4 Customer Information

The Customer Information page requests you to register your name and your organization in order to continue the setup procedure. The information is stored in the Windows registry and used in subsequent updates.

You can also determine whether you want to install the product for the current user only or for all users.

Make your selection, and click **Next >** to proceed.

4.5 Select Setup Type

4.5.1 Complete Installation

Select **Complete** installation, if you want to install all contents of the application and if you want to install to the default location

Click **Next >** to proceed

4.5.2 Custom Installation

Select **Custom** installation, if you want to decide what to install and/or if you want to change the installation folder

Click on the icons to select what program features you want to be installed and how they are installed

Click **Change...** if you want to change the current destination folder

Click **Space**, if you want to see how much the features will require space from your computer in different drives

When you are ready with your changes, click **Next >** to proceed

4.6 Ready to Install

Installation Wizard is ready to install

Click **< Back**, if you want to change any settings

Click **Install** to begin installation



4.7 Wait while Installing

While the progress bar proceeds in the following screen, please wait until Neoxen QX Framework is installed and configured for your system.

Next window will be opened on your screen automatically.

4.8 Finish Installation and Fill the Serial Numbers

The InstallShield Wizard Completed screen informs you that the installation is now complete and you can close the installer.

Review the information, and click **Finish** exiting the installation program.

The final phase is verifying that Neoxen QX Framework was successfully installed to your system.

4.9 Verify Installation

To verify that Neoxen QX Framework was successfully installed to your system, please go through the following checklist:

Verification checklist:

Check that the standard directory tree has been created to your hard disk

Check that your install folder contains the license folder, which includes licensing terms and conditions

Check that the program group and/or icon settings you chose were correctly set up. For example, in default installation there should be a Neoxen Systems folder in Start \ Programs.

Should the installation be unsatisfying in some way, please send e-mail to support@neoxen.com and remember to include appropriate notes to enable a proper investigation of the issue (platform used; was installation performed as described in this document; what exactly went wrong; etc.).

Once you have verified that the installation was successful, you can proceed to configuring your production environment as described in the following chapters.



5 Additional System Configuration (Optional)

This chapter provides instructions on how to configure your system to use Neoxen QX Framework. Read through the section that applies to the platform you are using and make the necessary changes as instructed.

5.1 Setting Paths for Dynamic Linking

You may choose to add the path of the Neoxen QX Framework redistributable files to your PATH environment variable. Setting the environment variables varies in the different Windows versions. Please refer to the online help of your system.



6 Development Environment Configuration

This chapter describes additional environment configuration that should be made if the user wishes to follow the coding standards set in the Neoxen QX Framework Developer's Guide.

6.1 Settings for Microsoft Visual Studio 2015

When a new development project is established, the process starts by creating the standard directory structure and the Project Workspace in Visual Studio.

If the project is about to use MFC, static linkage is not recommended. This setting is defined in the '**<Project> Property Pages-Configuration Properties-General**' page. The paths for the intermediate files and for the resulting binaries are defined in the same page.

NOTE: Always use relative instead of absolute paths where possible. All the paths should be relative to the PROJ directory, which contains the project workspace files. Use the Visual Studio internal variables as much as possible.

6.1.1 Hard Tabs vs. Spaces

'Hard tabs' should not be used in any event. Spaces should be used instead. By default, Visual Studio presents hard tabs with 3 spaces. However, this is a configurable option. In other environments this varies depending on the platform and the editor used.

With Neoxen QX Framework hard tabs should be expanded to 3 spaces. This setting must be set in Visual Studio via '**Tools-Options**' menu at the '**All Languages-Tabs**' page. Also '**Insert spaces**' option should be selected in order to avoid hard tabs.

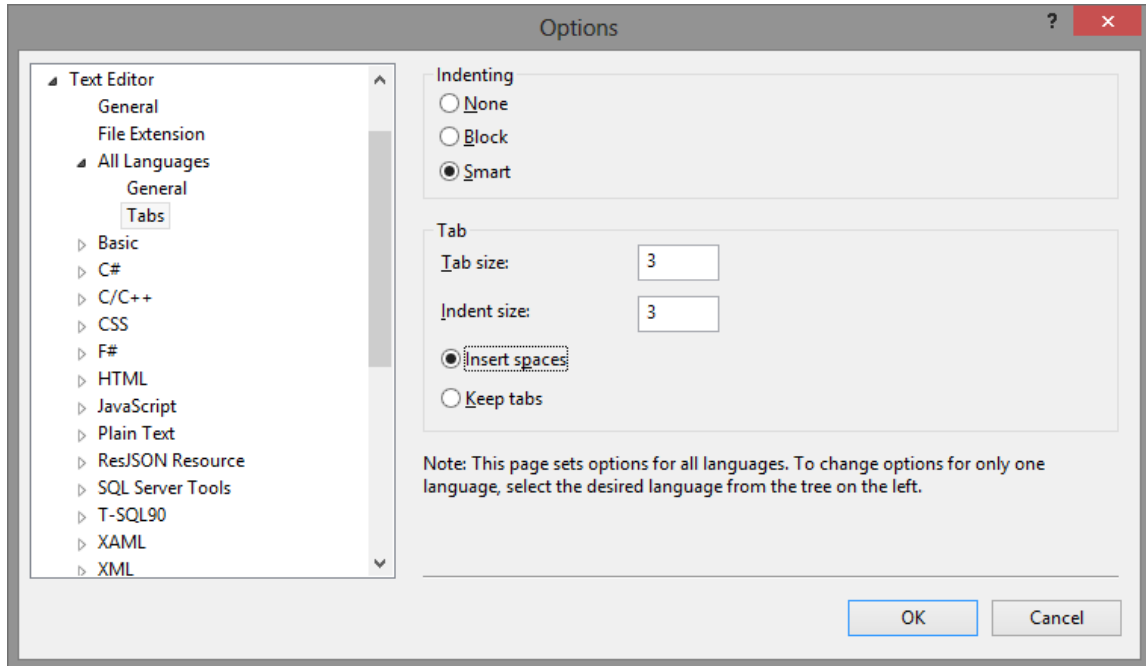


Figure 1.
Setting editing preferences in Visual Studio 2015

6.1.2 C/C++ Settings

The 'General' page contains the item '**Additional Include Directories**'. The correct paths for the project specific header files should be added here.

If the project is using MFC, the following addition should be used. In the '**Preprocessor**' page in the 'Preprocessor Definitions' you should add `_USRDLL` definition.

6.1.3 Linker Settings

If the project contains any of those Windows import libraries, which are not in the default list, they should be added through the '**Input**' page. This page should be used only for the compiler-specific import libraries and Neoxen QX SDK libraries.

6.1.4 Resources Settings

If the project contains custom resources or hand written headers for the resources used, the additional paths should be defined through the '**General**' page in the 'Additional Include Directories' setting.



7 Neoxen QX Framework Program Maintenance

This chapter describes how to modify, repair or uninstall Neoxen QX Framework from the supported platforms once installed.

7.1 Program Maintenance

After installation, it is possible to change installed features without reinstallation. Change process will open the Custom Installation window, where you can choose, which features you want to change in your previous installation.

7.1.1 Modify installed program features

Installation should begin automatically, when the CD-ROM is inserted in the CD-ROM drive. If it does not start, double click the file **autorun.exe** in the root directory of the CD-ROM.

Click the text: **Install Client Software** from the window opened. The Setup window for Neoxen QX Framework Client Software will appear.

Click the text: **Install Neoxen Software**

Select the language, which you want to use during the Setup, from the drop-down menu and click **OK**

Neoxen Software Setup starts to prepare the InstallShield Wizard to guide you in the setup process

Welcome window will be opened. It informs you about the phases to do.

Click **Next >** to proceed.

Program Maintenance window opens

Select **Modify**

Click **Next >** to proceed

Custom Setup window opens

Select the features you want to be included in or excluded from the installation, or change the type of installation

Note: Installation path cannot be modified. If you want to change it, please remove the previous installation and perform a new installation as a Custom Installation.



When you are ready with your modifications, click **Next >** to proceed
Installation Wizard is ready to install the modified configuration

Click **< Back**, if you want to change any settings

Click **I**nstall to begin installation

7.1.2 Repair installed program features

If some of your program features are damaged somehow, it is possible to perform a repairing installation on the previous installation.

Select **Repair** in Program Maintenance window

Follow instructions from 7.1.1 Modifying installed program features to get the Program Maintenance window

Click **Next >** to proceed

Installation Wizard is ready to install the modified configuration

Click **I**nstall to start repairing

7.1.3 Remove installed program

Select **Remove** in Program Maintenance window

Follow instructions from 7.1.1 Modifying installed program features to get the Program Maintenance window

Click **Next >** to proceed

Installation Wizard is ready to uninstall the program

Click **R**emove to start uninstallation



7.2 Uninstallation from Control Panel

7.2.1 Start the Uninstaller

The following screen is from Windows 8.1 Professional 64-bit Edition. Uninstallation as a concept is very similar in all Windows versions.

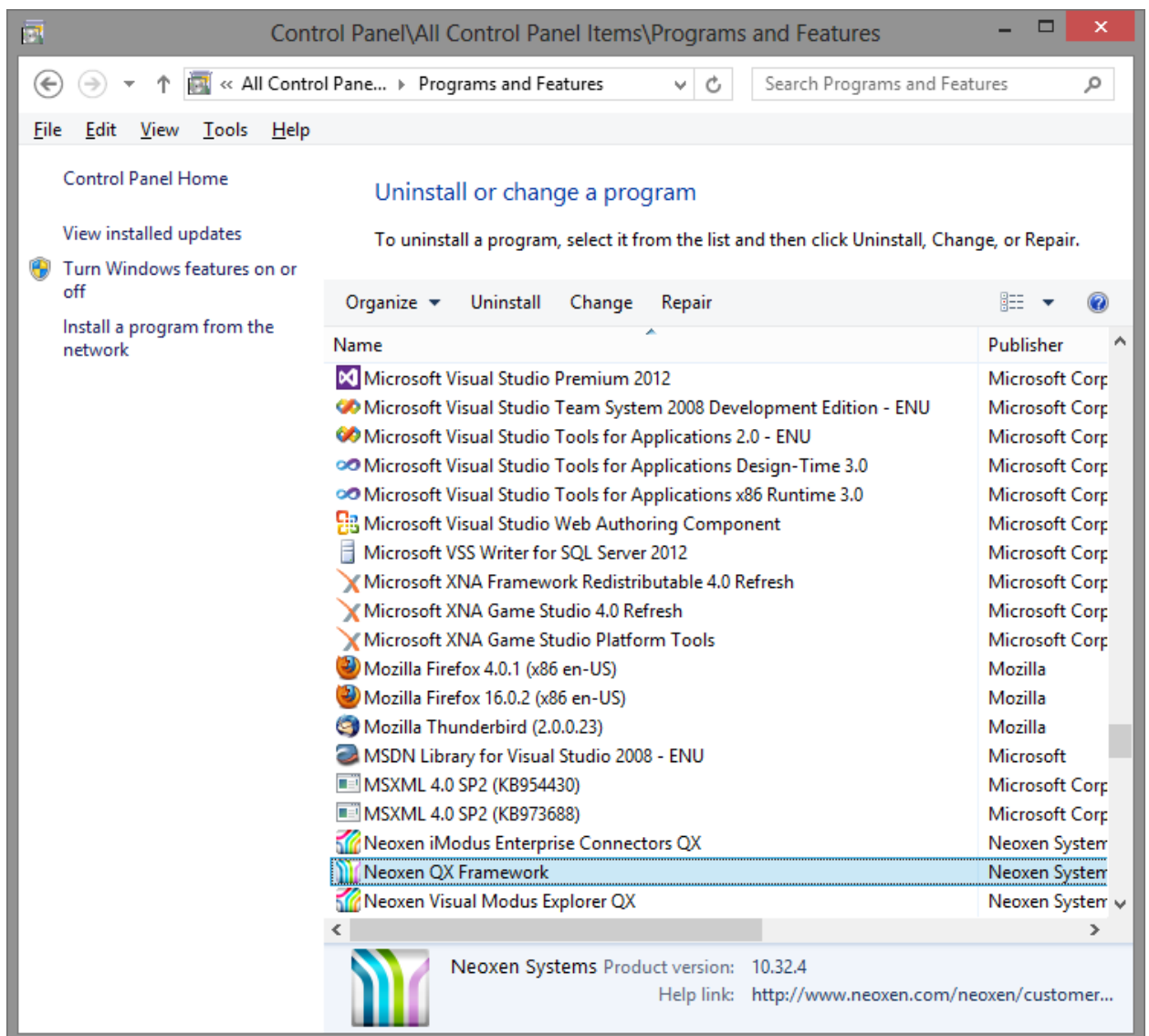


Figure 2.

Programs and Features in Windows 8

To start the uninstaller, do **one of the following**:

Go to **Control Panel**, click **Program Features**, select **Neoxen QX Framework** and click **Uninstall**



In filesystem folder go to the <Install dir> (C:\Program Files\Neoxen Systems\Neoxen QX Framework) **double-click** the unins000.exe file.

Open a command prompt, go to the <Install dir> (C:\Program Files\Neoxen Systems\Neoxen QX Framework) and type Unins000

7.2.2 Confirm Uninstallation or Exit Uninstaller

Once the uninstaller starts, you see the following message:

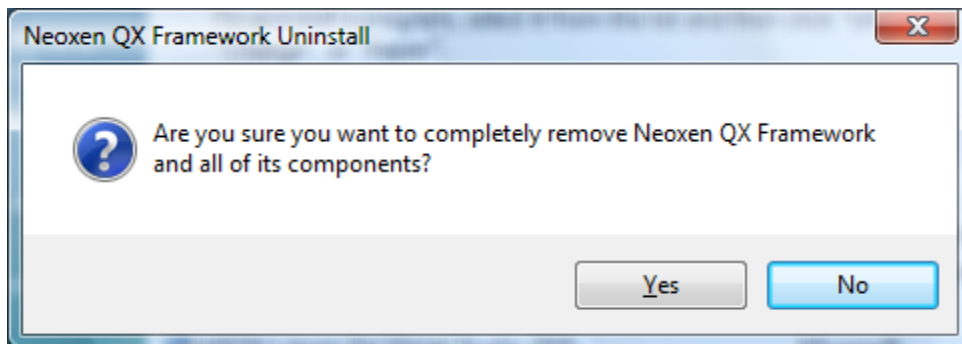


Figure 3.

Uninstaller - verification

Perform one of the following actions:

If you **do not** want to remove Neoxen QX Framework from your system, click **No** to exit the uninstaller. Your system will be preserved as it was before you started the uninstaller.

If you **do** want to remove Neoxen QX Framework from your system, click **Yes**.

Note: Files, folders, shortcuts and registry settings created after the original installation will not be deleted and you need to remove them by hand.

After you click **Uninstall**, you cannot cancel the uninstallation process.



7.2.3 Wait until Neoxen QX Framework has been Uninstalled

The next screen informs you that Neoxen QX Framework has been successfully uninstalled from your system:

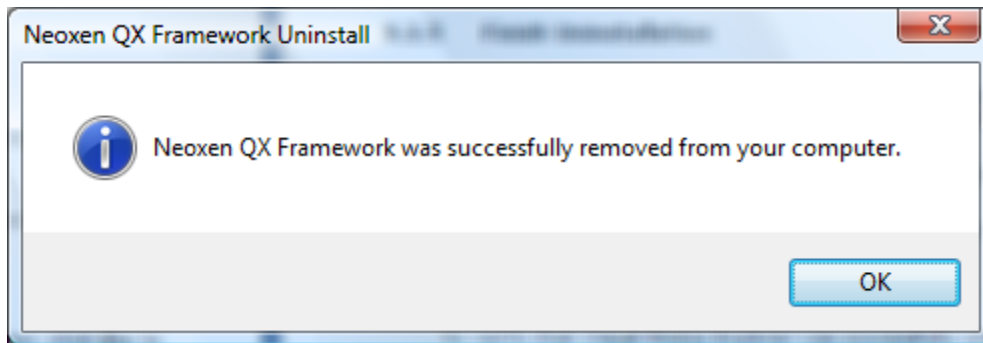


Figure 4.

Uninstaller - Uninstall complete

Review the information, and click **OK** to exit the uninstallation program.

7.2.4 Verify Uninstallation

To verify that Neoxen QX Framework was successfully uninstalled from your system, please go through the following checklist:

Verification checklist:

- Check that the standard directory tree has been removed from your hard disk.
- Check that the originally installed program groups and icons were removed from their locations.



8 Appendix I: Command Line Parameters

The Setup program accepts optional command line parameters. These can be useful to system administrators, and to other programs calling the Setup program.

/SP-

Disables the 'This will install... Do you wish to continue?' prompt at the beginning of Setup.

/SILENT, /VERYSILENT

Instructs Setup to run in a Silent Mode (silent or very silent). When Setup is silent the wizard and the background window are not displayed but the installation progress window is. When a setup is very silent this installation progress window is not displayed. Everything else is normal so for example error messages during installation are displayed and the startup prompt is (if you have not disabled it with the '/SP-' command line option explained above).

If a restart is necessary and the '/NORESTART' command is not used (see below) and Setup is silent, it will display a 'Reboot now?' message box. If it's '/VERYSILENT' it will reboot without asking.

/NOCANCEL

Prevents the user from canceling during the installation process, by disabling the Cancel button and ignoring clicks on the close button. Useful along with '/SILENT'.

/NORESTART

Instructs Setup not to reboot even if it is necessary.

/LOADINF="filename"

Instructs Setup to load the settings from the specified file after having checked the command line. This file can be prepared using the '/SAVEINF=' command as explained below.

Do not forget to use quotes if the filename contains spaces.



`/SAVEINF="filename"`

Instructs Setup to save installation settings to the specified file. Do not forget to use quotes if the filename contains spaces.

`/DIR="x:\dirname"`

Overrides the default directory name displayed on the Select Destination Directory wizard page. A fully qualified pathname must be specified.

`/GROUP="folder name"`

Overrides the default folder name displayed on the Select Start Menu Folder wizard page.

`/COMPONENTS="comma separated list of component names"`

Overrides the default components settings. Using this command line parameter causes Setup to automatically select a custom type.



Reader's Comments

We welcome your comments and suggestions on this manual. Your input will help us to write documentation that meets your needs.

If you have any other comments and you do not use this form, please be sure to report the name and version of the document, the page number, and the product name and release. Send your comments via email to the following address:

Email: info@neoxen.com

Please rate this document:	Excellent	Good	Fair	Poor
Accuracy (software works as manual says)	[]	[]	[]	[]
Completeness (enough information)	[]	[]	[]	[]
Clarity (easy to understand)	[]	[]	[]	[]
Organization (structure of subject matter)	[]	[]	[]	[]
Figures, if any (useful)	[]	[]	[]	[]
Examples, if any (useful)	[]	[]	[]	[]
Index, if any (ability to find topics)	[]	[]	[]	[]
Usability (ability to access information fast)	[]	[]	[]	[]

Please list errors that you have found in this document:

Page	Description
_____	_____
_____	_____
_____	_____
_____	_____

Additional comments and suggestions to improve this document:

What version of the software described by this document are you using?

Name/Title	_____	Dept.	_____
Company	_____	Date	_____
Mailing Address	_____		
Email	_____	Phone	_____



DOCUMENTATION LICENSE

This documentation, as well as the software described in it, is furnished under license and may only be used or copied in accordance with the terms of the license. The information in this document is furnished for informational use only, is subject to change without notice, and should not be construed as a commitment by Neoxen Systems.

Neoxen Systems assumes no responsibility or liability for any errors or inaccuracies that may appear in this document or any software that may be provided in association with this document. Except as permitted by such license, no part of this document may be reproduced, stored in a retrieval system, or transmitted in any form or by any means without the express written consent of Neoxen Systems.

Information in this document is provided in connection with the vendor products. No license, express or implied, by estoppels or otherwise, to any intellectual property rights is granted by this document.

Designers must not rely on the absence or characteristics of any features or instructions marked "reserved" or "undefined". Neoxen Systems reserves these for future definition and shall have no responsibility whatsoever for conflicts or incompatibilities arising from future changes to them.

TRADEMARKS

Neoxen, the Neoxen logo, Trelox, Neoxen QX, Neoxen QX Framework, Neoxen Modus, Neoxen Visual Modus, Neoxen iModus, Neoxen EveryPlace and Neoxen NaviList are trademarks or registered trademarks of Neoxen Systems in USA and/or other countries.

Microsoft, Microsoft Office, Microsoft Windows and Microsoft Visual Studio are registered trademarks of Microsoft Corporation in the United States and/or other countries.

Adobe, Acrobat and Acrobat Reader are either registered trademarks or trademarks of Adobe Systems Incorporated in the United States and/or other countries. Linux is a registered trademark of Linus Torvalds.

All other trademarks, registered trademarks and/or product names are property of their respective owners.

COPYRIGHT

Template from Neoxen Modus Methodology, copyright © 2016 Neoxen Systems.
© 2016 Neoxen Systems. All Rights Reserved.

RESTRICTED RIGHTS LEGENDS

Use, duplication, or disclosure by the government is subject to restrictions as set forth in subparagraph (c)(1)(ii) of the Rights in Technical Data and Computer Software clause in DFARS 252.227-7013 or subparagraphs (c)(1) and (2) of the Commercial Computer Software -- Restricted Rights in 48 CFR 52.227-19 as applicable.

Unpublished - rights reserved under the Copyright Laws of the United States and International treaties.

READER'S COMMENTS

A reader's comments form is provided at the end of this document. Please take a moment and give us feedback on our documentation.